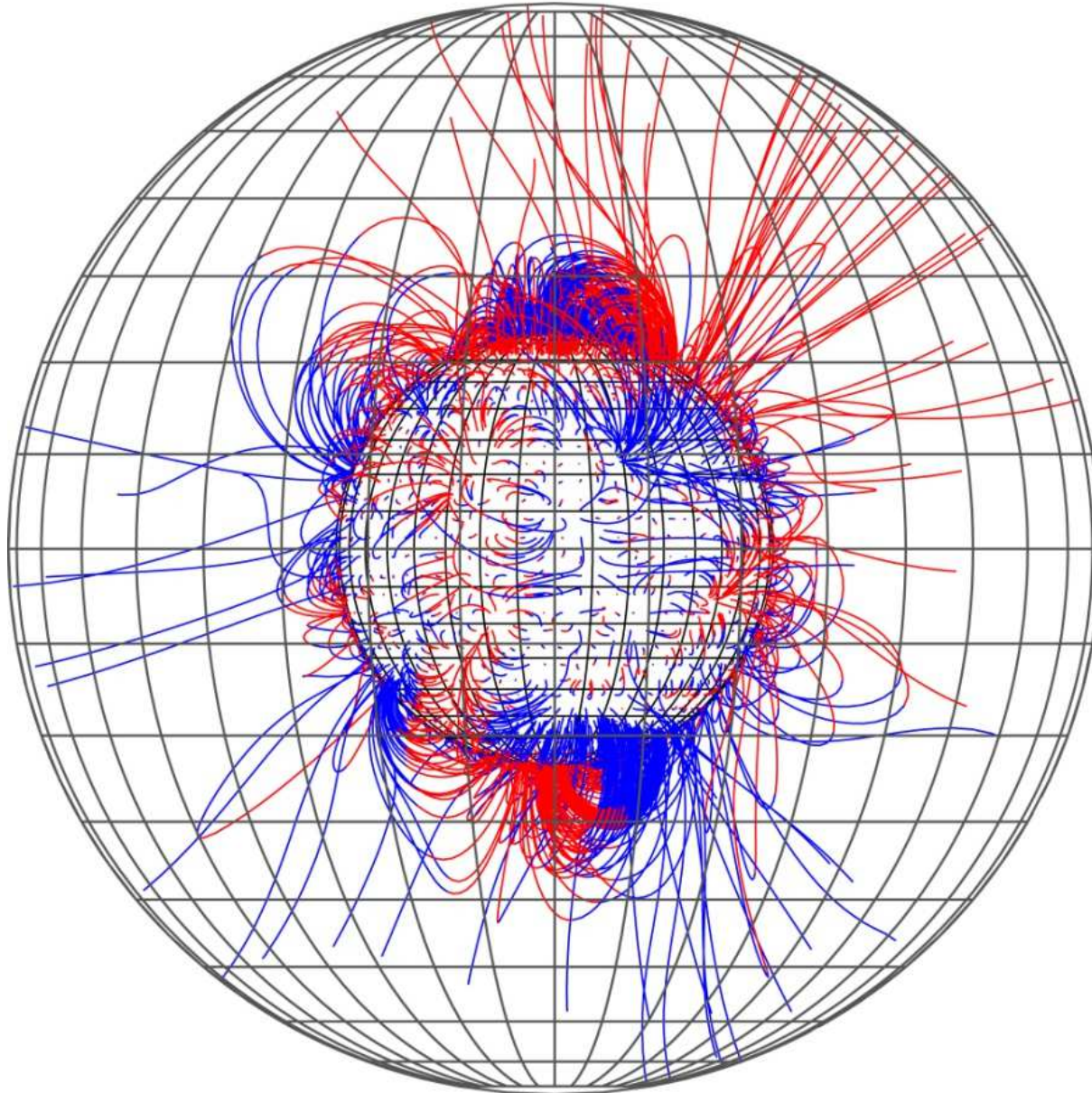
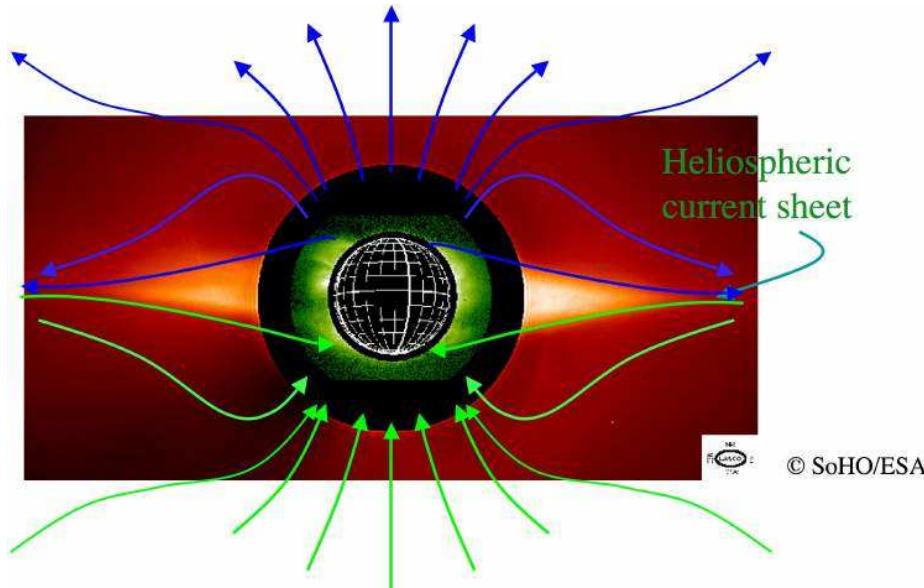


# Source Surface

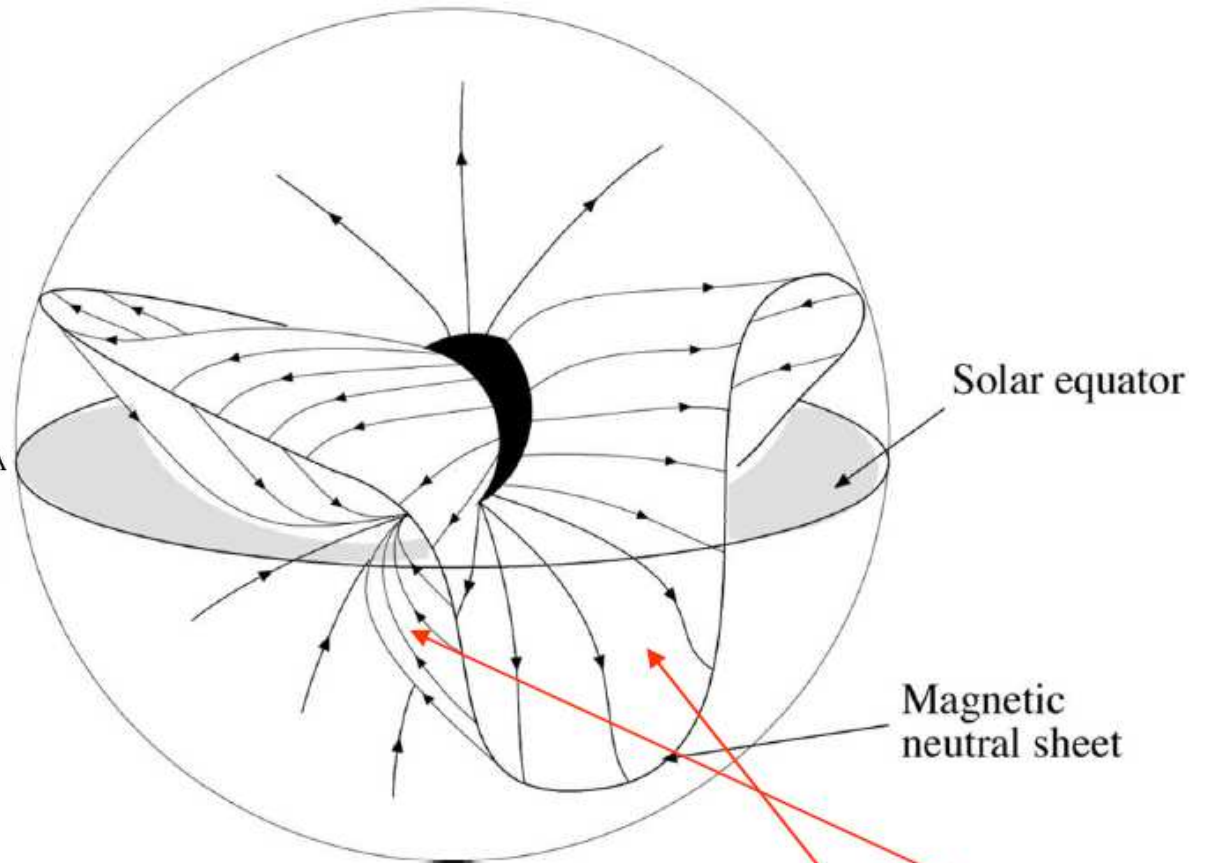
An imaginary sphere at 2.5 solar radii, beyond which solar wind flow becomes radial.



# Heliospheric Current Sheet

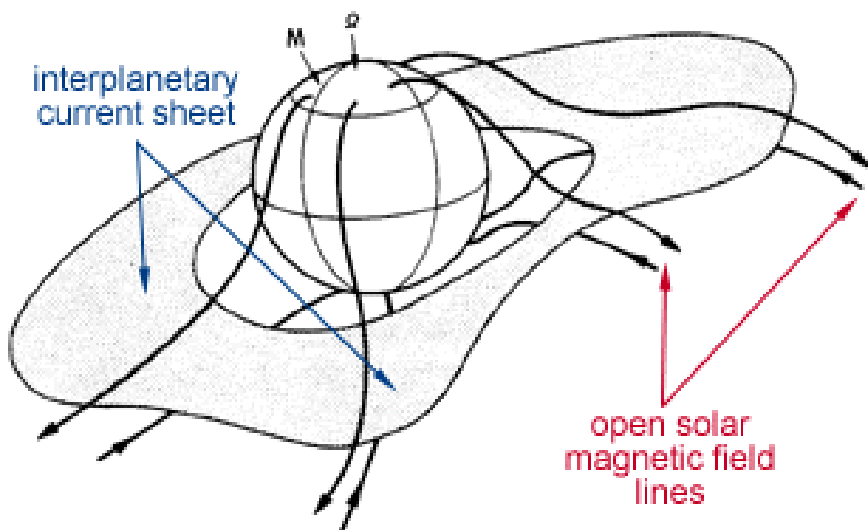


<http://www.nmdb.eu/?q=node/135>



**“ballerina skirt”**

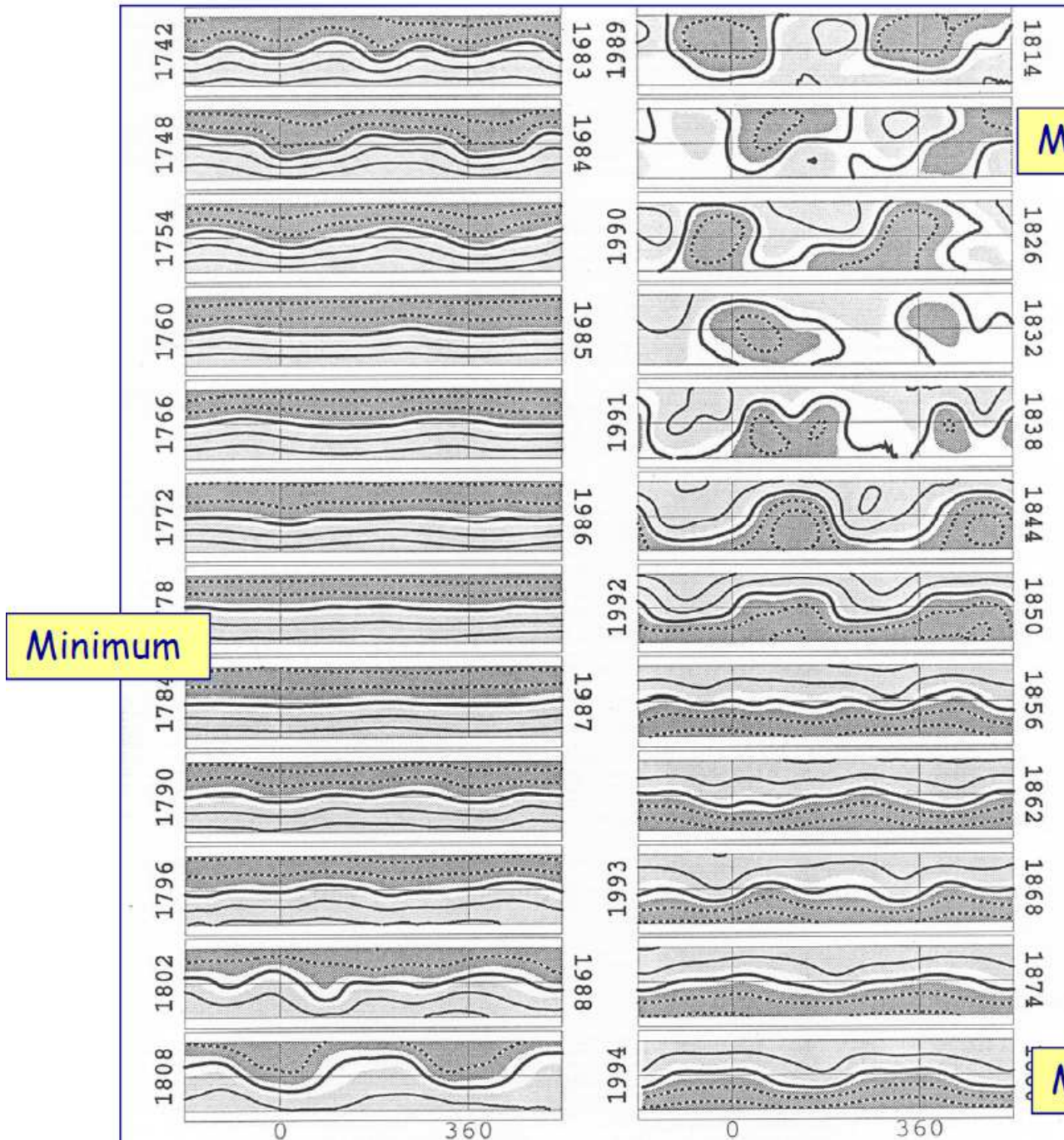
The Earth can be  
**“toward”** sector or in  
**“away”** sector



<http://pluto.space.swri.edu/image/glossary/IMF.html>

<http://theory.physics.helsinki.fi/~plasma/info.html>

# The ballerina dancing through the solar cycle



Maximum

The magnetic topology of the large-scale heliosphere

At activity maximum, the ballerina skirt flips over, and the magnetic polarity is then reversed at next minimum. Thus, the magnetic cycle of the sun (the "Hale-cycle") takes 22 years!

Hoeksema, 1995

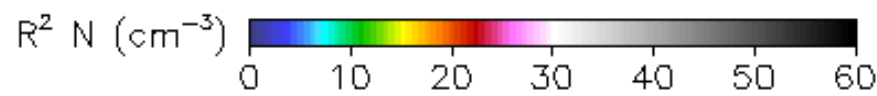
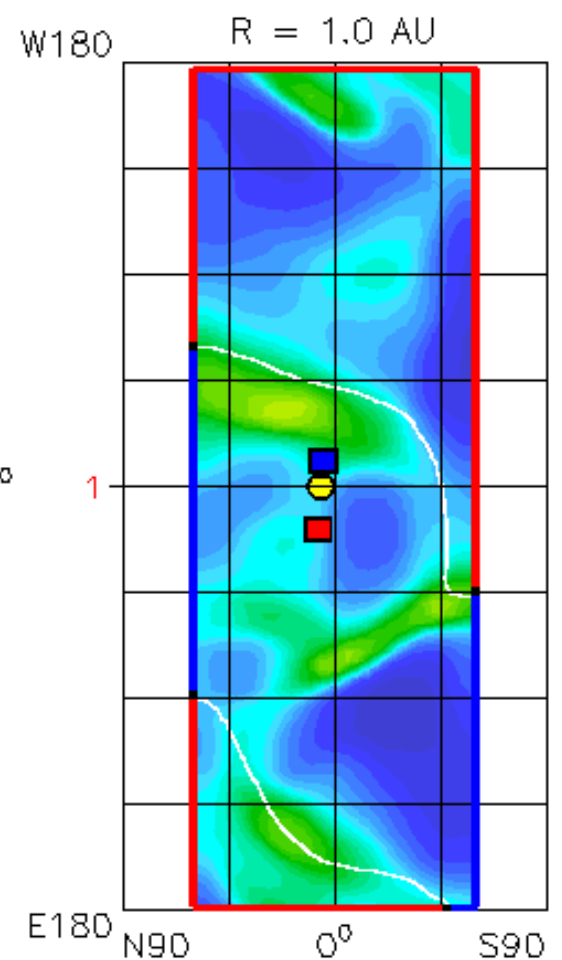
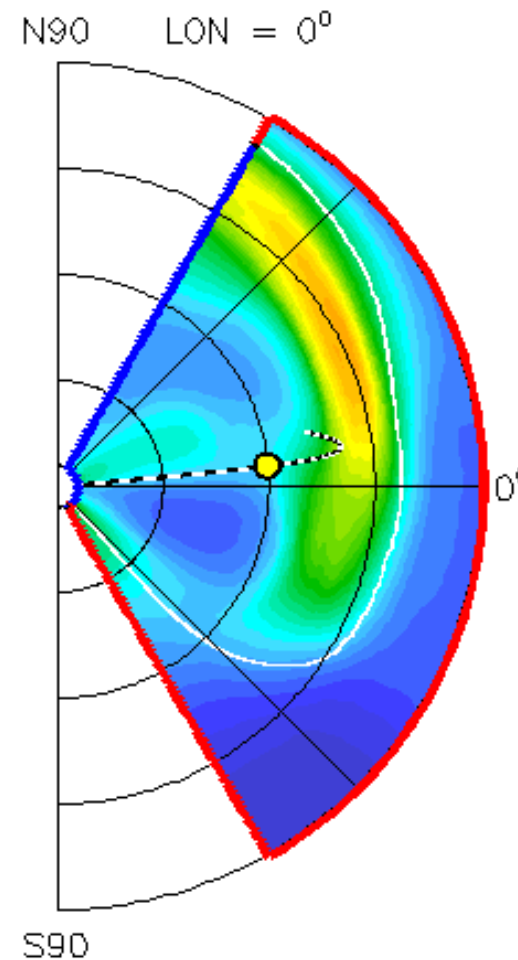
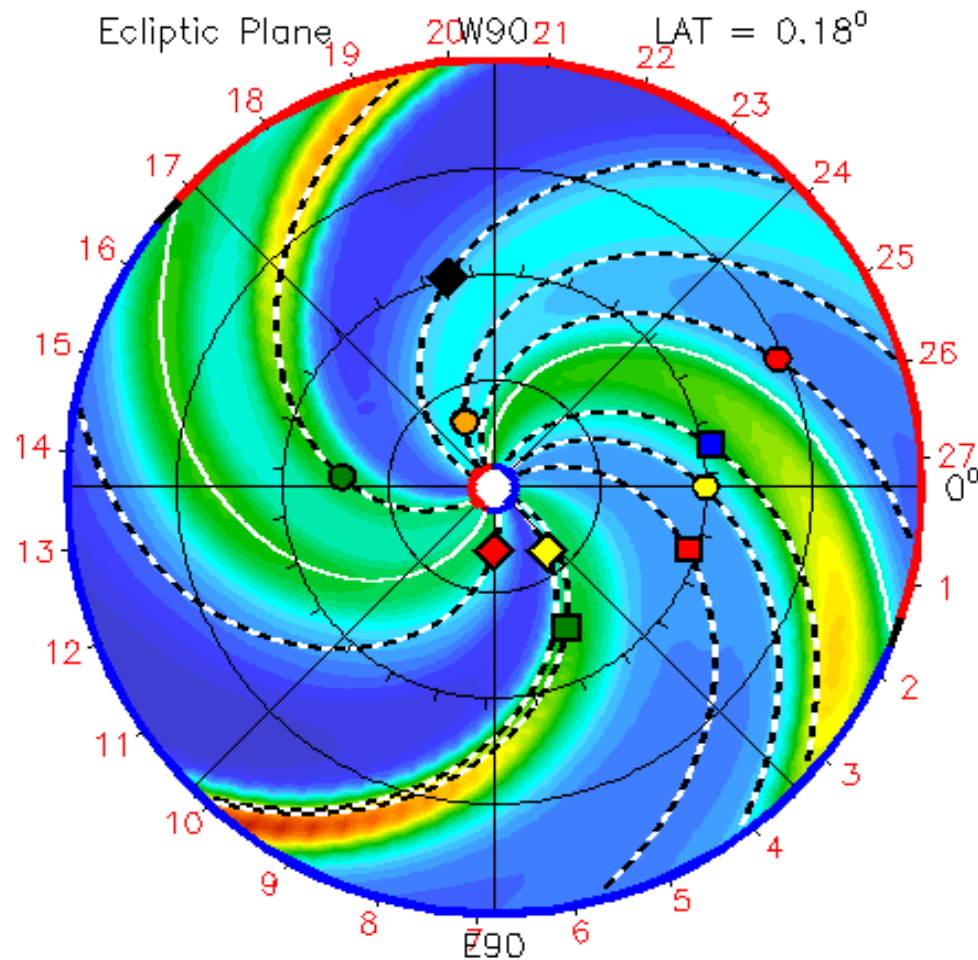
Minimum

2022-10-16T00:00

2022-10-16T00 +0.00 day

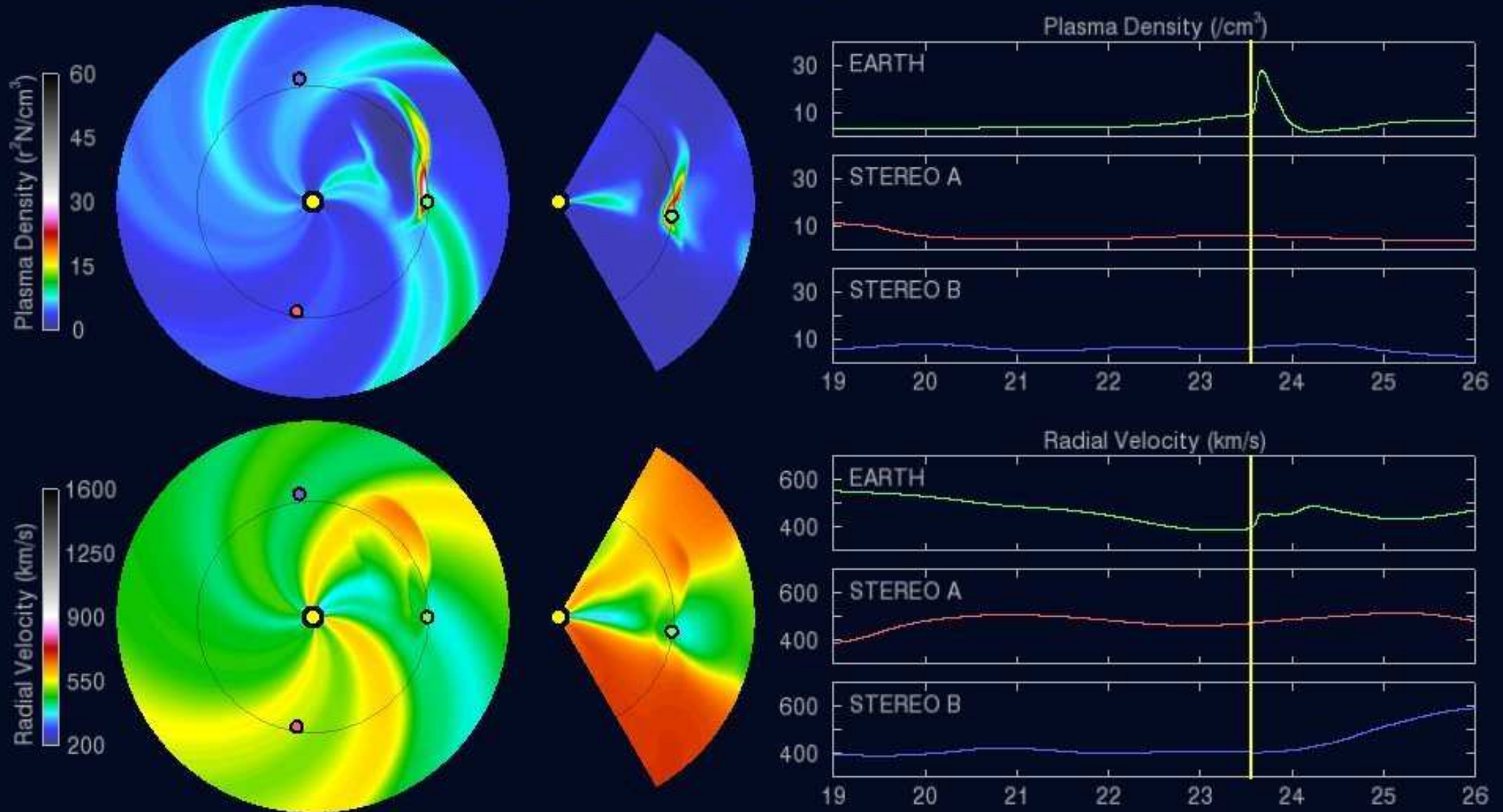
- Earth
- Mars
- Mercury
- Venus
- Stereo\_A
- Stereo\_B

- Bepi
- OSIRIS-REx
- ParkerSP
- Solo



ENLIL-2.7 lowres-2263-d4b1 WSA\_V2.2 GONGZ-2263 UNIQUE1017084932/256x30x90x1.2263-d4b1.32-mcplumn1cd-1.g53q5d2.gongz-2022-10-16T00 2022-10-17

2019-03-23 13:00:00



Space Weather Prediction Center

Run Time: 2019-03-21 00:00 UT Mode: CME

Image Created: 2019-03-21 01:29 UT